

# **NetTerminal**

---

Model 500W

Windows Based Terminal

---

# Table Of Contents

<b>INTRODUCTION</b> .....	<b>1</b>
<b>NETTERMINAL FLASHWARE</b> .....	<b>1</b>
BOOT OPTIONS.....	1
<b>CONFIGURING CLIENT FOR THE FIRST TIME</b> .....	<b>2</b>
<b>TERMINAL PROPERTIES</b> .....	<b>4</b>
<b>TERMINAL CONNECTION MANAGER</b> .....	<b>5</b>
CONFIGURING A SESSION. ....	5
CONNECTING TO SERVER.....	5

## Introduction

This document provides information and procedures for the administration of the NetTerminal Model 500W Windows Based Terminal Flashware. This document is intended for NetTerminal administrators and advanced NetTerminal users and assumes an understanding of Windows NT™, networking, and TCP/IP.

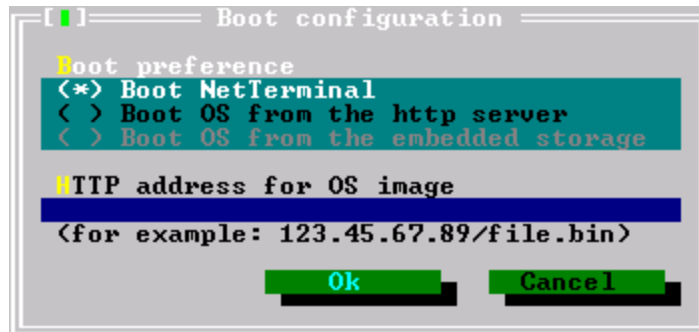
## NetTerminal Flashware

The NetTerminal Flashware is an embedded 32-bit operating system and TCP/IP protocol stack (ATL-OS) that provides a high performance, versatile feature set. The unique boot architecture of NetTerminal is designed to boot Multiple O/S platform. This document discuss booting of Windows CE / Windows Based Terminal (WBT) from a local storage and from remote HTTP server.

## Boot Options

By default NetTerminal Model 500W will boot Windows environment. If Windows does not boot properly or you are upgrading to Model 500W from Model 500 then read this section otherwise go directly to section, Configuring .

During booting Press <ESC> key and the system will take you to administrative interface of ATL-OS. Press <ALT>S + B , this will take you to Boot configuration interface. Select the desired option in Boot preference dialog box.



Options	Description
Boot NetTerminal	This option will always boot NetTerminal administrative interface
Boot OS from the http server	This option will boot WBT image from a remote Web server location defined in field "HTTP address for OS image and boot
Boot OS from the embedded storage	Selecting this option will allow the NetTerminal to boot WBT image from it's embedded storage. Note, this option is only available if an embedded storage is installed in the NetTerminal

If you select remote booting of OS then you will have to set TCP/IP properties in the Administrative interface of ATL-OS. To setup IP or to use other features of ATL-OS refer to NetTerminal User's Guide.

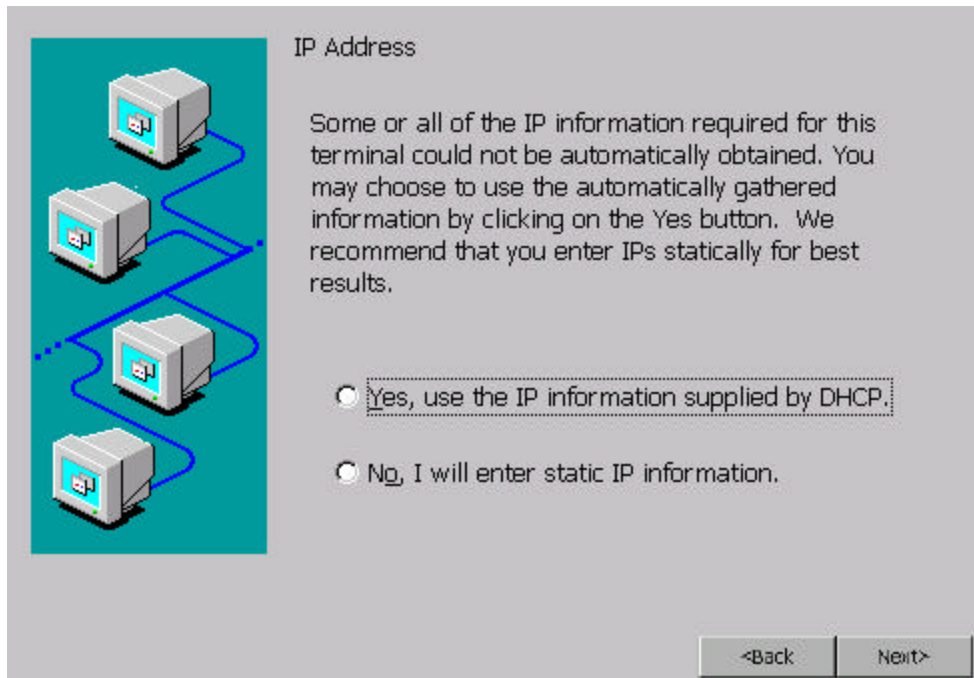
Remote booting of OS is a very useful option and can be used for the following reasons:

1. Central deployment of Windows CE for version control
2. Embedded storage is corrupt
3. No embedded storage is available

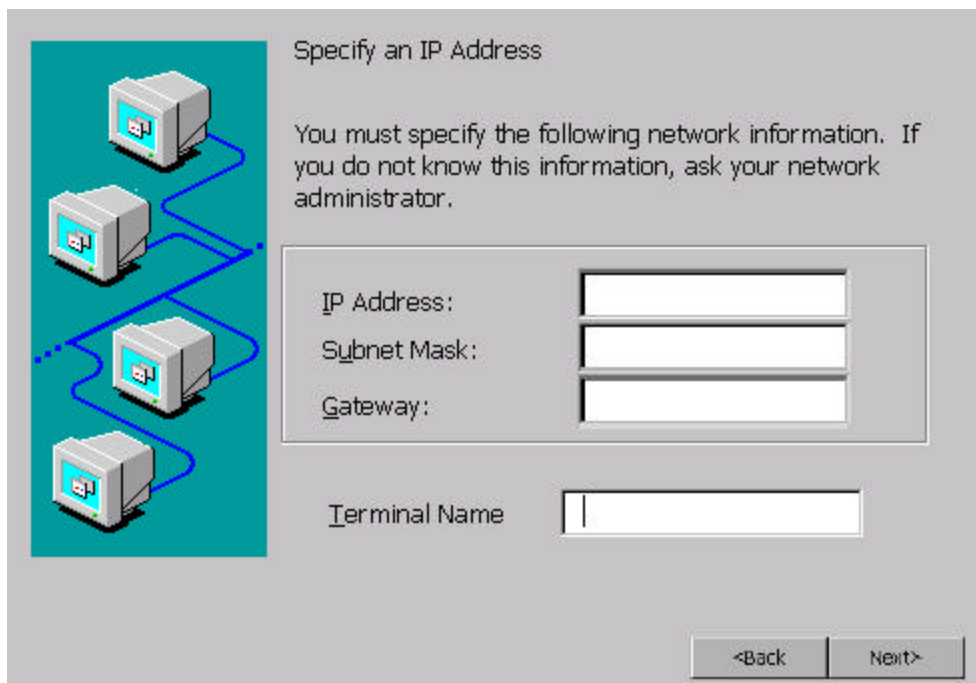
## Configuring Client for the first time

NetTerminal comes with a setup wizard as factory default to help in setting up the client for the first time.

1. When you first boot the NetTerminal you will see setup wizard dialog box. Press the Next button to start the setup.
2. Setup wizard will pop up a Microsoft End User License Agreement. After reviewing the license press the Accept button.
3. An IP/DHCP address dialog box will appear. Select the desired option and press the Next button.



4. If a static IP option was selected a new dialog IP address box will appear . Enter the IP address, Subnet Mask and Gateway information.



Specify an IP Address

You must specify the following network information. If you do not know this information, ask your network administrator.

IP Address:

Subnet Mask:

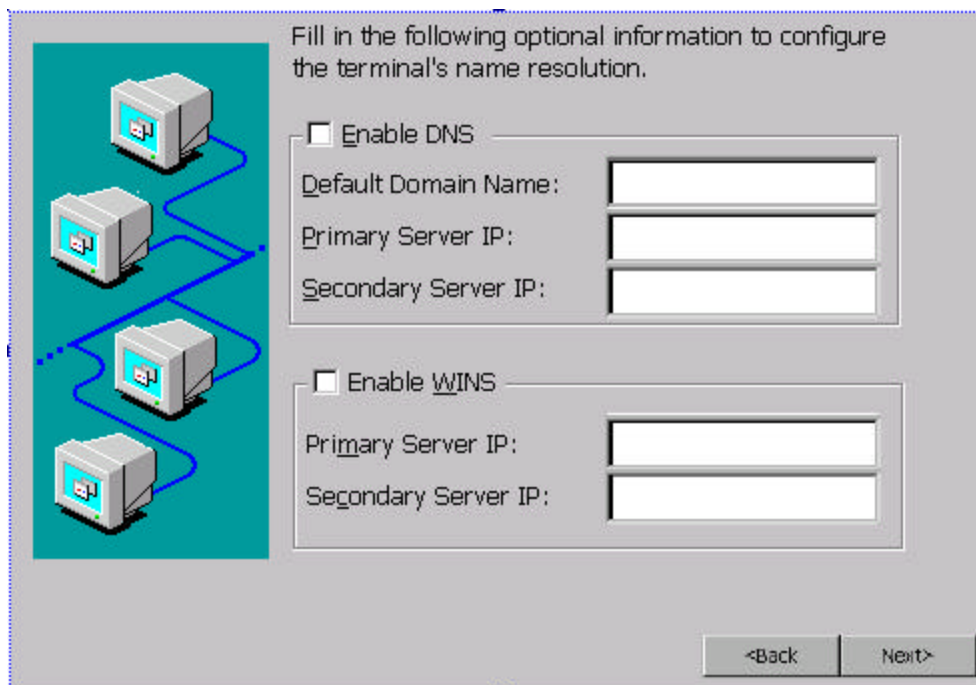
Gateway:

Terminal Name

<Back    Next>

The dialog box features a teal background on the left with four computer icons connected by blue lines. The main area is light gray with a title bar. The text is in a standard sans-serif font. The input fields are simple rectangular boxes with a slight shadow.

5. In the DNS dialog box enter DNS and WINS information if any.



Fill in the following optional information to configure the terminal's name resolution.

Enable DNS

Default Domain Name:

Primary Server IP:

Secondary Server IP:

Enable WINS

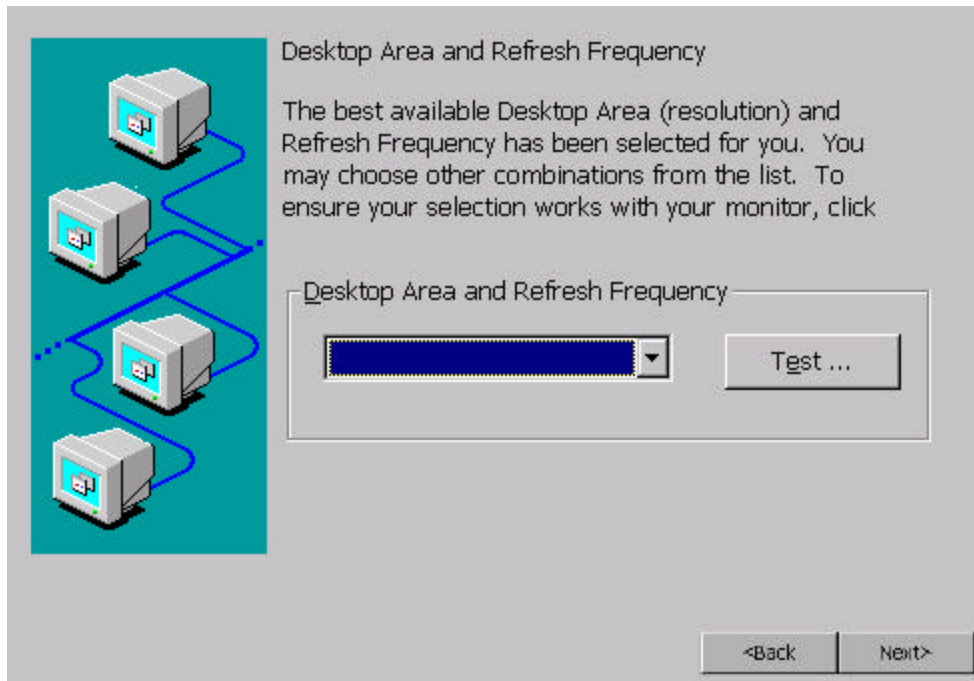
Primary Server IP:

Secondary Server IP:

<Back    Next>

The dialog box features a teal background on the left with four computer icons connected by blue lines. The main area is light gray with a title bar. The text is in a standard sans-serif font. The input fields are simple rectangular boxes with a slight shadow.

6. The next dialog box will prompt you to select display mode and resolution.



7. You will be now prompted to select a local Printer Setup. It is recommended that you select No on this option. You can set the printer later in administration screen as local or remote printer. If you do select Yes then you will be asked to select the printer type.
8. A dialog box will appear informing you that you have successfully completed the Setup. Press Finish.
9. You will be prompted to reboot the system to activate the settings.

## Terminal Properties

Once the client is rebooted it will take you to a Terminal Connection Manager. If at any point you want to change the settings of Terminal, such as IP address or Display resolution, Press **F2** key and the system will take you to Terminal Properties screen.

## **Terminal Connection Manager**

Upon successfully configuring the NetTerminal a Terminal Connection Manger screen will appear every time the NetTerminal is powered on. Connection manager is used to configure session or connect to a session to a host server.

### **Configuring a session.**

1. Press the Configure Tab.
2. Select the Add button and a New connection dialog box will appear.
3. Select a desired Protocol, RDP, ICA or Terminal Emulation.
4. Based on the option selected you will be asked to enter information to that selected option.
5. Follow the options screen and save the settings.

### **Connecting to Server**

1. Select the Connections Tab to enter the Connections screen.
2. Select the Session you want to connect to.
3. Click on the Connect button to enable the session connection.